

The essential guide Magelis

Human Machine Interfaces

2013



ZOOM



Vijeo Designer

Thanks to its intuitive design, Vijeo Designer - the single configuration software tool for Schneider Electric's entire HMI range - can process all your operator dialogue projects quickly and easily.



Magelis GTO is the first optimised terminal that does not compromise features and performances for most of the OEM applications

State of the art display

- The 5 screen size range consists of a 65 K colour TFT screen that provides the best-ever visualisation of Magelis range.
- The design of the panel, with its LED backlight, allows energy saving and dimming functionality.

Optimised communication

- Magelis GTO offers remote control access and embedded Ethernet provides easy integration in your IT structure.
- The up to date peripheral links enable easy operating use as well as an easy maintenance.

Easy to install and sustainable offer

- With Magelis GTO, you can rely on a long term investment. The existing cut-out is the same size for the new range, enabling you an immediate installation when your current panel needs to be replaced.
- The configuration tool (software) is also the same to enable an immediate restart of the operations.
- The installation is made easy with:
 - only 4 installation fasteners for the whole range
 - unique fast connection power plug for the whole range
 - the connectors located in the same place on the panel for a better wiring



Up to 40%

The 7" wide screen provides a 40% increase in the available screen area.

The external keypad, also available with the 3,5" screen, allows the screen area to provide maximum information.



HMI software
Intelligent Data Service for traceability
Vijeo Designer + IDS



SCADA software
Client in harsh environments
Vijeo Citect

Magelis solutions for demanding applications

A large range of products for cleanliness and explosive industrial environments.

Designed to meet demanding environment requirements

- The cleanliness is provided by the absence of front joints or groove, and by the corrosion resistant stainless steel grade 304.

Dedicated certifications and standards

- Adapted to hazardous locations: UL and ATEX*
- Designed to meet hygiene requirements: EN 1672-2
- Non migrating flat seals to avoid contamination: FDA 21 CFR 177.2006
- IDS add-on for software traceability: FDA 21 CFR Part 11

Adaptable to your automation architectures

- From ultra rugged operator panel Magelis GTO to Magelis Panel PC, ready to be integrated with your IT structure

Magelis GTO

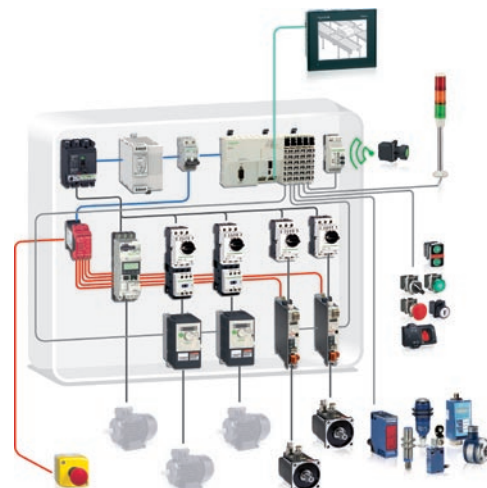
- Touch screen 65 K colors with stainless steel cover
- One Ethernet connection
- SD card
- IP 66K and conformal coating

Magelis Panel PC

- Touch screen 16 million colours, stainless steel bezel
- Dual Ethernet gigabit, 0 or 2 PCI/PCIe slots
- Compact flash, HDD or flash disk SSD
- Windows operating system
- AC or DC power supply

Magelis Open Panel

- Similar Panel PC with embedded operating system & Vijeo Designer run time unlimited



* Performance range Panel PC not ATEX

Human Machine Interfaces

Magelis, a complete offer of Human Machine Interfaces to meet your needs in a wide range of applications.

All in One

Small Panels

Magelis STO/STU

Advanced Panels

Magelis XBT GT/GK/GTW/GH

HMI Controllers

Magelis XBTGC

PC Panels

Magelis Panel PC

BOX

PC BOX

Magelis Box PC

Display

Industrial Display

Magelis iDisplay

Softwares

Configuration

Vijeo Designer

Remote access

Vijeo Design'Air

Contents



Human Machine Interfaces

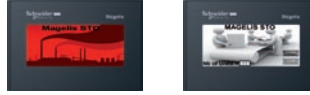
Display units, terminals, industrial PCs

| | |
|--|----------|
| Small Panels, Magelis STO/STU | 2 to 3 |
| Advanced Panels, Magelis GTO and XBT GT / GK / GH / GTW | 4 to 7 |
| HMI Controllers, Magelis XBT GC | 8 |
| Common accessories including USB accessories | 9 |
| PC BOX, Magelis BOX PC | 10 |
| Industrial Display, Magelis iDisplay | 11 |
| PC Panels, Magelis Panel PC | 11 to 13 |

Configuration softwares

| | |
|---|----|
| For Magelis STO/STU, GTO, XBT GT / GK / GH / GTW terminals, BOX PC and Panel PC | |
| Vijeo Designer | 14 |
| Vijeo Design'Air (remote control) | 15 |

Small Panels Magelis STO with graphic screen



| Type | | Characteristics | | | | | |
|---------------------------------|-------------------------|--|------------------|--------------------|-----------|-----------|-------------|
| Display | Touchscreen | 3.4" (200 x 80 pixels) Monochrome LCD | | | | | |
| | Backlight | Green, orange, red | White, pink, red | Green, orange, red | | | |
| Ambient temperature | | 0...50 °C | | | | | |
| Memory | Application/Backup | 16MB/128KB | | | | | |
| | Extension | No, via USB stick only | | | | | |
| Functions | Real time clock | Access to the PLC real-time clock | | | | | |
| | Variables max. | 8000 | | | | | |
| Third-party protocols supported | | Siemens, Omron, Mitsubishi, Allen-Bradley (Rockwell Automation), ABB | | | | | |
| Communication | Ethernet port | No | No | x1 RJ45 | x1 RJ45 | No | |
| | Serial line | RS 232C/RS 485 (COM1) | | | No | No | Zelio Logic |
| | USB | USB Type-A (2.0) x 1, USB mini-B (2.0) x 1 | | | | | |
| Replaceable Battery | | No | | | | | |
| Dimensions | External W x H x D (mm) | 117 x 78 x 28 | | | | | |
| | Cut-out W x H (mm) | 105 x 66 | | | | | |
| Supply voltage | | 24VDC | | | | | |
| Conformity to standards | | EN, IEC, UL 508, ISA 12, 12, CSA, Marine Bridge & Deck (1), GOST | | | | | |
| Reference | | HMISTO511 | HMISTO512 | HMISTO531 | HMISTO532 | HMISTO501 | |

(1) Except HMISTO53.

Magelis STU with graphic screen



| Type | | Characteristics | | | |
|---------------------------------|-------------------------|--|------------------|---------------------------|------------------|
| Display | Touchscreen | 3.5": 320 x 240 pixels | | 5.7", 320 x 240 pixels | |
| | Type | 65,536-color TFT | | | |
| Front Face | | Standard | Without logotype | Standard | Without logotype |
| Ambient temperature | | 0...50 °C | | | |
| Memory | Application/Backup | 32MB/64KB | | | |
| | Extension | No, via USB stick only | | | |
| Functions | Real time clock | Access to the PLC real-time clock | | | |
| | Variables max. | 8000 | | | |
| Third-party protocols supported | | Siemens, Omron, Mitsubishi, Allen-Bradley (Rockwell Automation), ABB | | | |
| Communication | Ethernet port | x1 RJ45 | | | |
| | Serial line | RS 232C/RS 485 (COM1) | | | |
| | USB | USB Type-A (2.0) x 1, USB mini-B (2.0) x 1 | | | |
| Replaceable Battery | | No | | | |
| Dimensions | External W x H x D (mm) | Front: 98 x 16 x 81 | | Front: 163 x 17.5 x 129.5 | |
| | | Rear: 118 x 30 x 98 | | | |
| | Cut-out | Ø22 mm | | | |
| Supply voltage | | 24VDC | | | |
| Conformity to standards | | EN, IEC, UL 508, ISA 12,12,CSA , Marine Bridge & Deck, GOST | | | |
| References | | HMISTU655 | HMISTU655W | HMISTU855 | HMISTU855W |

Common accessories for Magelis STO/STU

| Serial connection to PLC/Drives (1) | HMI STO/STU | Connector/Physical link | Length | Reference |
|---------------------------------------|--------------|-------------------------|--------|-----------------------|
| Twido, Premium, Micro | RJ45 (COM1) | Mini-DIN/RS485 | 2.5 m | XBT Z9780 |
| M238/M258/M340, ATS, ATV | RJ45 (COM1) | RJ45/RS485 | 2.5 m | XBT Z9980 |
| ATV, ATS | RJ45 (COM1) | RJ45/RS485 | 1 m | VW3A8306R10 |
| M340 | USB | USB mini-B | 1.8 m | BMX XCAUSBH018 |
| Siemens S7, PPI, MPI | RJ4 5 (COM1) | SUBD9/RS485 | 2.5 m | XBT ZG9721 |
| Rockwell Micro-Logix, DF1-Full Duplex | RJ45 (COM1) | 8-way mini-DIN /RS232 | 2.5 m | XBT Z9733 |
| Rockwell SLC5, | RJ45 (COM1) | SUBD9/RS232 | 2.5 m | XBT Z9734 |
| Omron, Sysmac FINS (SIO) | RJ45 (COM1) | SUBD9/RS232 | 2.5 m | XBT Z9743 |
| Mitsubishi FX CPU | RJ45 (COM1) | Mini-DIN 8/RS232 | 2.5 m | HMIZ950 |

(1) For the full list of connection accessories, please consult our site <http://www.schneider-electric.com>.

Accessories and spare parts for Magelis STO

| Accessories | |
|---|------------------|
| Protective sheets | HMIZS60 |
| Communication cable between Zelio Logic SR2/SR3 and HMISTO501 | SR2CBL09 |
| Spare parts | |
| Spring Clips | XBT Z3002 |
| Installation Gasket | HMI ZS50 |
| Set of 5 Power Connectors | HMI ZSPWO |

Accessories and spare parts for Magelis STU

| Accessories | | |
|---|-------------------------|-------------------------|
| Touchscreen size | 3.5" | 5.7" |
| Set of 5 Screen Protective Sheets | HMIZS61 | HMIZS62 |
| Accessory Kit for HMI STU 655/855, contains: USB standard Type A cable holder; USB mini B cable holder; Anti-rotation Tee; 2 Panel adaptors | HMI ZSU KIT | |
| Spare parts | | |
| Touchscreen size | 3.5" | 5.7" |
| Front face module (without logotype) | HMIS65 (HMIS65W) | HMIS85 (HMIS85W) |
| Rear CPU module | HMIS5T | |
| Set of 5 Power Connectors | XBT ZGPWS1 | |
| Kit of 10 display module fixing nuts | ZB5AZ901 | |
| Tightening Wrench | ZB5AZ905 | |



| Type | | Characteristics (65 536-colour TFT touchscreen) | | | |
|---------------------------------|-----------------------------------|---|--------------------|----------------------------------|--------------------|
| | | 3.5": 320 x 240 pixels | | 5.7": 320 x 240 pixels | |
| Degree of protection | Front Face | Standard, IP65 | | | |
| Conformal coating | | No (1) | | | |
| Ambient temperature | | 0...50 °C | | 0...55 °C | |
| Memory | Application/Backup | 64MB/128KB | 96MB/512KB | 64MB/128KB | 96MB/512KB |
| | Extension | No, via USB stick only | | | SD card |
| Functions | Real time clock | Yes, built-in | | | |
| | Variables max. | 8000 | | | |
| Third-party protocols supported | | Siemens, Omron, Mitsubishi, Allen-Bradley (Rockwell Automation), ABB | | | |
| Communication | Ethernet port | No | x1 RJ45 | No | x1 RJ45 |
| | Serial line | RS 232C (COM1) and RS 485 (COM2) (2) | | | |
| | USB | USB Type-A (2.0) x 1, USB mini-B (2.0) x 1 | | | |
| Dimensions | External / Cut-out W x H x D (mm) | 132 x 106 x 42 / 118.5 x 92.5 | | 169.5 x 137 x 59.5 / 156 x 123.5 | |
| Conformity to standards | | EN, IEC, UL 508, ISA12,12, CSA, ATEX Zone2/22, Marine Bridge & Deck (3), GOST | | | |
| Reference | 24 VDC | HMI GTO1300 | HMI GTO1310 | HMI GTO2300 | HMI GTO2310 |

(1) Available on request; (2) COM1 only (RS232C/RS485) in HMI GTO1310; (3) Except GTO●●●5

Accessories

| | | |
|---|-------------------|-------------------|
| Set of 5 Screen Protective Sheets | HMI ZG60 | HMI ZG62 |
| Plastic covers for Harsh Environment (IP67) | HMI ZECOV1 | HMI ZECOV2 |

Magelis XBT GT with 5,7" to 12" touchscreen



| Type | | Characteristics | | | | |
|---------------------------------|-----------------------------------|--|------------------|--------------------------------|------------------------|------------------|
| | | 5.7": 320 x 240 pixels | | 5.7": 640 x 480 pixels | 7.5": 640 x 480 pixels | |
| Display | Type | 4096-color STN | 65,536-color TFT | | 4096-color STN | |
| Ambient temperature | | 0...50 °C | | | | |
| Memory | Application/Backup | 16MB/512KB | | 32MB/512KB | | |
| | Extension | Compact Flash card | | | | |
| Functions | Real time clock | Yes, built-in | | | | |
| | Variables max. | 8000 | | | | |
| | Multimedia | No | | | Audio out | |
| | HMI Controller function | Yes, with CANopen Master extension (programming in SoMachine software) | | | | |
| Third-party protocols supported | | Siemens, Omron, Mitsubishi, Allen-Bradley (Rockwell Automation), ABB | | | | |
| Communication | Ethernet port | No | x1 RJ45 | | | |
| | Serial line | RS232/RS422/RS485 (COM1) + RS485 (COM2) | | | | |
| | Fieldbus extensions | Profibus DP, DeviceNet, Modbus Plus, FIPWAY, FIPIO | | | | |
| | USB | USB Type-A (1.1) x 1 | | USB Type-A (1.1) x 2 | USB Type-A (1.1) x 1 | |
| Dimensions | External / Cut-out W x H x D (mm) | 167.5 x 60 x 135 / 156 x 123.5 | | 215 x 60 x 170 / 204.5 x 159.5 | | |
| Conformity to standards | | EN, IEC, UL 508, ISA 12,12 (2) ,CSA, ATEX Zone 2/22 (3) , Marine (4), GOST | | | | |
| Reference | 24VDC | XBTGT2220 | XBTGT2330 | XBTGT2930 (1) | XBTGT2430 | XBTGT4230 |

(1) High-brightness backlight, 1000 cd/m2, (2) Except XBTGT2930, (3) Zone 22 only XBTGT6●●● / 7●●●, (4) Except XBTGT2220/2430 /2930 /4230 /5430

Accessories

| | | | | | |
|---|-----------------|-----------------|-----------------|-----------------|---|
| Set of 5 Screen Protective Sheets | XBT ZG62 | XBT ZG64 | | | |
| Plastic covers for Harsh Environment (IP67) | XBT ZG70 | XBT ZG70 | XBT ZG70 | XBT ZG70 | – |



| 7.0": 800 x 480 pixels | 7.5": 640 x 480 pixels | 10.4": 640 x 480 pixels | 12.1": 800 x 600 pixels | 5.7": 320 x 240 pixels | 10.4": 640 x 480 pixels | 12.1": 800 x 600 pixels |
|---|------------------------|--------------------------|--------------------------|----------------------------|--------------------------|--------------------------|
| Standard, IP65 | | | | Stainless steel, IP66K | | |
| No (1) | | | | Yes | | |
| 0...50 °C | | 0...55 °C | | | | |
| 96MB/512KB | | | | | | |
| SD card | | | | | | |
| Yes, built-in | | | | | | |
| 8000 | | | | | | |
| Siemens, Omron, Mitsubishi, Allen-Bradley (Rockwell Automation), ABB | | | | | | |
| x1 RJ45 | | | | | | |
| RS 232C (COM1) and RS 485 (COM2) (2) | | | | | | |
| USB Type-A (2.0) x 1, USB mini-B (2.0) x 1 | | | | | | |
| 218x173x60 / 204.5x159.5 | | 272.5x214.5x57 / 259x201 | 315x241x56 / 301.5x227.5 | 213.5x181x59.5 / 195x162.5 | 316.5x258.5x57 / 298x240 | 359x285x56 / 340.5x266.5 |
| EN, IEC, UL 508, ISA12,12, CSA, ATEX Zone2/22, Marine Bridge & Deck (3), GOST | | | | | | |
| HMI GTO3510 | HMI GTO4310 | HMI GTO5310 | HMI GTO6310 | HMI GTO2315 | HMI GTO5315 | HMI GTO6315 |

| HMI ZG63 | HMI ZG64 | HMI ZG65 | HMI ZG66 | HMI ZG62 | HMI ZG65 | HMI ZG66 |
|------------|------------|------------|------------|----------|----------|----------|
| HMI ZECOV4 | HMI ZECOV4 | HMI ZECOV5 | HMI ZECOV6 | – | – | – |



| 7.5": 640 x 480 pixels | 10.4": 640 x 480 pixels | 10.4": 800 x 600 pixels | 12.1": 800 x 600 pixels | 15": 1024 x 768 pixels |
|---|-------------------------|----------------------------|-------------------------|--------------------------------|
| 65,536-color TFT | | | | |
| 0...50 °C | | | | |
| 32MB/512KB | | | | |
| Compact Flash card | | | | |
| Yes, built-in | | | | |
| 8000 | | | | |
| Audio out | Video in, Audio in/out | Audio out | Video in, Audio in/out | Audio out |
| Audio out | Audio out | Audio out | Audio out | Video in, Audio in/out |
| Yes, with CANopen Master extension (programming in SoMachine software) | | | | |
| Siemens, Omron, Mitsubishi, Allen-Bradley (Rockwell Automation), ABB | | | | |
| x1 RJ45 | | | | |
| RS232/RS422/RS485 (COM1) + RS485 (COM2) | | | | |
| Profibus DP, DeviceNet, Modbus Plus, FIPWAY, FIPIO | | | | |
| USB Type-A (1.1) x 2 | | | | |
| 215 x 60 x 170 / 204.5 x 159.5 | | 271 x 57 x 213 / 259 x 201 | | 313 x 56 x 239 / 301.5 x 227.5 |
| 395x60x294 / 383.5x282.5 | | | | |
| EN, IEC, UL 508, ISA 12,12 (2) ,CSA, ATEX Zone 2/22 (3) , Marine(4), GOST | | | | |
| XBTGT4330 | XBTGT4340 | XBTGT5330 | XBTGT5340 | XBTGT5430 |
| XBTGT6330 | XBTGT6340 | XBTGT7340 | | |

| XBT ZG64 | XBT ZG65 | XBT ZG66 | MPC YK5 0SPS KIT |
|----------|----------|----------|------------------|
| – | XBT ZG71 | XBT ZG71 | – |
| – | XBT ZG71 | XBT ZG71 | – |

Advanced Panel Magelis XBT GK with touchscreen and keypad



| Type | | Characteristics (65,536-color TFT touchscreen) | |
|-----------------------------------|-----------------------------------|--|------------------------------|
| | | 5.7", 320 x 240 pixels | 10.4": 640 x 480 pixels |
| Data entry | Soft function keys with LED | 14 | 18 |
| | Static function keys with LED | 10 + legends | 12 + legends |
| | Service keys / Alphanumeric keys | 8 / 12 | |
| | Industrial pointer | Yes | |
| Ambient temperature | | 0...50 °C | |
| Memory | Application/Backup | 16MB/512KB | 32MB/512KB |
| | Extension | Compact Flash card | |
| Functions | Real time clock | Yes, built-in | |
| | Variables max. | 8000 | |
| | HMI Controller function | Yes, with CANopen Master extension (programming in SoMachine software) | |
| Third-party protocols supported | | Siemens, Omron, Mitsubishi, Allen-Bradley (Rockwell Automation), ABB | |
| Communication | Ethernet port | x1 RJ45 | |
| | Serial line | RS232/RS422/RS485 (COM1) + RS485 (COM2) | |
| | Fieldbus extensions | Profibus DP, DeviceNet, Modbus Plus, FIPWAY, FIPIO | |
| | USB | USB Type-A (1.1) x 1 | USB Type-A (1.1) x 2 |
| Dimensions | External / Cut-out W x H x D (mm) | 220.3 x 265 x 60.3 / 209 x 243 | 296 x 332 x 72.7 / 285 x 309 |
| Conformity to standards | | EN, IEC, UL 508, ISA 12,12 , CSA, GOST | |
| Reference | 24VDC | XBTGK2330 | XBTGK5330 |
| Accessories | | | |
| Set of 5 Screen Protective Sheets | | XBT ZG68 | XBT ZG69 |

Magelis XBT GH with handheld 5.7" touchscreen



| Type | | Characteristics (65,536-colour TFT touchscreen) | |
|---------------------------------|--------------------------------|--|-------------|
| | | 5.7", 320 x 240 pixels | |
| Data entry | Function keys / Operation key | 11 / 1 with LED (validation touchscreen) | |
| Safety components | Key Switch | Yes for ON/OFF | Yes |
| | 3 positions Enable switch | Yes, OK signal in intermediate position only | Yes |
| | Emergency stop | Yes, red with 2 safe contacts and one auxiliary contact | No |
| Ambient temperature | | 0...50 °C | |
| Memory | Application/Backup | 32MB/512KB | |
| | Extension | Compact Flash card | |
| Functions | Real time clock | Yes, built-in | |
| | Variables max. | 8000 | |
| Third-party protocols supported | | Siemens, Omron, Mitsubishi, Allen-Bradley (Rockwell Automation), ABB | |
| Communication | USB | USB Type-A (1.1) x 1 | |
| Dimensions | External W x H x D (mm) | 224 x 174 x 87.1 | |
| Conformity to standards | | EN, IEC, UL 508 | |
| Reference | 24VDC | XBT GH2460 | XBT GH2460B |
| Cable interface | | connection with junction box | |
| Length | | 3 m | 5 m |
| Reference | | XBTZGHL3 | XBTZGHL5 |
| | | | XBTZGHL10 |
| Junction box | | connection with PLCs | |
| Communication | | 1 SubD9 (RS232 / RS422 - RS 425) serial link, 1 Ethernet RJ45 IEEE 802.3 10/100 T-BASE | |
| Connection | 32 pins connector | Interface cable 3 or 10 m | |
| | 24 pins screw terminals blocks | For 24 V DC supply, state of I/O safety components | |
| Reference | | XBTZGJBOX | |

A large number of accessories (cables, memory cards, protective sheets, etc.) is available for the Advanced panels range.



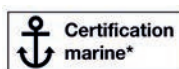
| Type | | Characteristics | | |
|---------------------------------|-----------------------------------|--|-------------------------|---------------------------------------|
| | | Standard 10" IP65 | Standard 15" IP65 | Stainless steel 15" IP65 |
| Display | 16 million-colour TFT touchscreen | 10.4", 800x600 pixels | 15" (1024 x 768 pixels) | |
| | Type | 16 million-color TFT | | 16 million-color TFT, Stainless Steel |
| Ambient temperature | | 0...50 °C | | |
| CPU | | Atom Z510 1,1 Ghz Fanless | | |
| Operating System | | Windows Embedded 2009 on 2 GB CF (SLC) storage (1) | | |
| Pre-installed software | | Vijeo Designer Run Time unlimited licence, Office & PDF readers, Internet browser, .Net 3.5, Vijeo Citect web client | | |
| Memory | RAM/SRAM (Backup) | 1GB/512KB | | |
| | Extension | SD card | | |
| Functions | Real time clock | Yes, built-in | | |
| | Variables max. | 12000 | | |
| Third-party protocols supported | | Siemens, Omron, Mitsubishi, Allen-Bradley (Rockwell Automation), ABB | | |
| Communication | Ethernet port | x2 RJ45 | | |
| | Serial line | RS-232C (COM1) | | |
| | USB | USB Type-A (2.0) x 3 (2 bottom side and 1 front side) | | USB Type-A (2.0) x 2 |
| Replaceable Battery | | Yes | | |
| Dimensions | External W x H x D (mm) | 323 x 260 x 72 | 402 x 301 x 72 | |
| | Cut-out W x H (mm) | 303 x 243 | 383.5 x 282.5 | |
| Conformity to standards | | EN, IEC, UL 508, ISA12.12 ,CSA | | |
| Reference | 24VDC | HMIGTW5354 | HMIGTW7354 | HMIGTW7354S |

(1) Please, upgrade to 4GB CF to run Intelligent Data Service add on

| Accessories | | | |
|--|------------------|------------------|------------------|
| Set of 5 Screen Protective Sheets | MPC YK2 0SPS KIT | MPC YK5 0SPS KIT | MPC YK5 0SPS KIT |
| Power line filter for marine certification | – | HMIYLFIMAR11 | – |

Control extension for XBT GT/GK

| Type of module | CANopen Master |
|-----------------|---|
| Characteristics | Class M10 limited 16 slaves, Standard DS301 V4.02 |
| Reference | XBTZGCANM |





| Type | | Characteristics | |
|---------------------------|------------------------------|---|---|
| Display | LCD screen size / Resolution | 5,7" / QVGA | |
| | Type | STN monochrome, gray | 65536-color TFT |
| Functions | Representation of variables | Alphanumeric, bitmap, bargraph, gauge, button, light, clock, flashing light, keypad | |
| | Curves / Alarm logs | | |
| Communication | Control | 5 languages IEC | |
| | Serial link | 1 Sub9 (RS 232/RS 422 - RS 485) | |
| Downloadable protocols | Networks | — | Ethernet, IEEE 802.3 10/100 BASE-T, RJ45 |
| | | Mitsubishi (Melsec), Omron (Sysmac), Rockwell Automation (Allen Bradley), Siemens (Sematic) Uni-TE, Modbus, Modbus TCP | |
| Development software | | SoMachine (on Windows XP and Vista) | |
| Dimensions W x D x H (mm) | | 207 x 76 x 157 | |
| Compatibility with PLCs | | Twido, Modicon TSX Micro, Modicon Premium, Modicon Quantum, Modicon M340 | |
| «Compact Flash» card slot | | No | |
| USB port Host type A | | 1 | 1 |
| Built-in Ethernet TCP/IP | | No | Yes |
| Integrated I/O | | 16I/16O 24 VDC | |
| Extensions | | 3 modules TM2 or CANopen module | |
| Supply voltage | | 24 VDC | |
| References | Source Output | XBTGC2120T | XBTGC2330T |
| | Sink Output | XBTGC2120U | XBTGC2330U |

Extensions

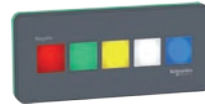
| Type of module | CANopen Master |
|-----------------|---|
| Characteristics | Class M10 limited 16 slaves, Standard DS301 V4.02 |
| References | XBTZGCCAN |

| Type of module | Digitals Inputs / Outputs | | | | | | |
|-----------------|--------------------------------|---------------------------------|-----------------------|-----------------------|---------------------------------|--|---|
| Characteristics | 8I 24 VDC Screw terminal | 16I 24 VDC Screw terminal | 16I 24 VDC HE10 | 32I 24 VDC HE10 | 8I 120 VAC Screw terminal | 4I 24 VDC 40 Relays Screw terminal | 16I 24 VDC 80 Relays Screw terminal |
| References | TM2DDI8DT | TM2DDI16DT | TM2DDI16DK | TM2DDI32DK | TM2DAI8DT | TM2DMM8DRT | TM2DMM24DRF |

| Type of module | Digitals Inputs / Outputs | | | | | |
|-----------------|---|----------------------------------|----------------------------------|---|--|-------------------|
| Characteristics | 8O Transistor 24 VDC Screw terminal | 16O Transistor 24 VDC HE10 | 32O Transistor 24 VDC HE10 | 8O Relays 230 VAC 30 VDC Screw terminal | 16O Relays 230 VAC 30 VDC Screw terminal | |
| References | Source Output | TM2DD08TT | TM2DD016TK | TM2DD032TK | TM2DRA8RT | TM2DRA16RT |
| | Sink Output | TM2DD08UT | TM2DD016UK | TM2DD032UK | — | — |

| Type of module | Analog Inputs / Outputs | | | | | |
|-----------------|-------------------------|------------------|-----------------------------------|--------------------|---------------------------------------|------------------|
| Characteristics | 2I Current/Voltage | 2I Thermocouple | 4I Current/Voltage Temperature | 8I Current/Voltage | 8I Temperature | 8I PTC |
| References | TM2AMI2HT | TM2AMI2LT | TM2AMI4LT | TM2AMI8HT | TM2ARI8LRJ TM2ARI8LT | TM2ARI8HT |

| Type of module | Analog Inputs / Outputs | | | | |
|-----------------|-------------------------|------------------|--|--------------------------------------|--|
| Characteristics | 1O Current/Voltage | 2O Voltage | 2I Current/Voltage 1O Current/Voltage | 2I Temperature 1O Current/Voltage | 4I Current/Voltage 2O Current/Voltage |
| References | TM2AMO1HT | TM2AVO2HT | TM2AMM3HT | TM2ALM3LT | TM2AMM6HT |



| Magelis USB accessories programmable in Vijeo Designer | Monolithic Tower Lights Ø 60 mm lens size, IP 42 | | Illuminated Switch IP65, Ø 22 mm mounting | Biometric Switch IP65, Ø 22 mm mounting |
|--|--|---|--|--|
| Description, characteristics | With 3 multi-color LEDs and a clear lens, a 2-tone buzzer (up to 85 dB), with pre-assembled USB cable for easy connection (1), USB cable clamp to ensure firm connection | | 5 customizable function keys with multi-LED. Soft/static F-keys or alarms acknowledgement. | Manages access to HMI data, levels of authorization, traceability of users and operations. Database management from PC |
| | Direct base mounting | 100 mm aluminium tube mounting + fixing plate | | |
| Compatibility with Magelis | XBT GT/GK/GC; HMI GTO | | XBT GT/GK/GC; HMI GTO/GTW; iPC | XBT GT/GK/GC; HMI STU/GTO/GTW; iPC |
| Reference | XVGU3SWV | XVGU3SHAV | HMIZRA1 | XB5S5B2L2 |

(1) For connection to HMI, use either the Schneider Electric USB cable (BMXXCAUSBH018) or a third-party USB Type A/mini B cable of maximum length 4 m/13.12 ft.

| Advanced Panels Accessories | | | |
|---|--|--|----------------|
| Type of accessories | Description or function | Type of terminal | Reference |
| Blank memory cards, industrial grade | Compact Flash 2 GB | XBT GT/GK; HMI GTW | HMIYCF0211 |
| | Compact Flash 4 GB | HMI GTW only | HMIYCF0411 |
| | Compact Flash 8 GB | HMI GTW only | HMIYCF0811 |
| | SD card 4 GB | HMI GTO/GTW | HMI ZSD 4G |
| Remote USB port for terminals | Enables the USB port to be located remotely on the rear of the XBT terminal on a panel or enclosure door (Ø 21 mm fixing device) | For USB type A port | XBT ZGUSB |
| | | For USB mini-B port | HMI ZSUSBB |
| USB fastenings Sold in lots of 5 | Holds the USB connection in place | GT2**0 / GT4**0 | XBT ZGCLP1 |
| | | GT5**0 / GT6**0 / GT7**0 | XBT ZGCLP2 |
| | | XBT GK | XBT ZGCLP3 |
| | | HMI GTO/STO (USB type A) | HMI ZGCLP1 |
| | | HMI GTO/STO (USB type mini-B) | HMI ZSCLP3 |
| Cables for application transfer - Terminal to PC | | USB Type A - PC | XBT ZG935 |
| | | USB mini-B - PC | BMX XCAUSBH018 |
| Serial printer cable for XBT GT/GK/GTW terminals and HMI GTO panels | | | HMI ZURS |
| Serial link isolation units | RS 232C/RS 485 (COM1) and RS 485 (COM2) | XBT GT2...0 to XBT GT7340; XBT GK; HMI GTO | XBT ZGI232 |
| | | | XBT ZGI485 |
| Stylus, Sold in lots of 5 | | | XBT ZGPEN |

| Connection of Magelis terminals to fieldbuses | | | |
|---|-----------------------|-----------------------|------------|
| Type of bus/ network | Connection components | Type of terminal | Reference |
| FIPWAY, FIPIO | USB gateway | XBT GT / GK - HMI GTO | TSXCUSBFIP |
| Modbus Plus | USB gateway | XBT GT / GK - HMI GTO | XBZGUMP |
| | | HMITGW | TSXCUSBMBP |
| Profibus DP | Card on expansion bus | XBT GT / GK (1) | XBZGPD |
| Device Net | Card on expansion bus | XBT GT / GK (1) | XBZGDVN |

| Serial connection from HMI terminals to PLC/Drives (1) | | | | |
|--|------------------------------|-----------------------------|--------|----------------|
| Type of PLC/Drives | Type of terminal | Connector/ Physical link | Length | Reference |
| Twido, Premium, Micro | XBT GT / GK - HMI GTO (COM1) | Mini-DIN/RS232 | | TSX PCX 1031 |
| M238/M258/M340, ATS, ATV | XBT GT / GK - HMI GTO (COM2) | RJ45/RS485 | 2.5m | XBT Z9980 |
| ATV, ATS | XBT GT / GK - HMI GTO (COM2) | RJ45/RS485 | 1m | VW3A8306R10 |
| M340 | USB | USB mini-B | 1.8m | BMX XCAUSBH018 |
| Siemens S7, Simatic MPI | XBT GT / GK - HMI GTO (COM1) | 9-way SUB-D/RS232 | | XBT ZG9292 |
| Siemens S7, Simatic PPI & MPI | XBT GT / GK - HMI GTO (COM2) | 9-way SUB-D/RS485 | | XBT ZG9721 |
| Rockwell, DF1-Full Duplex; Mitsubishi A Link | XBT GT / GK - HMI GTO (COM1) | 25-way SUB-D/RS232 | | XBT ZG9731 |
| XBT ZG9740, | XBT GT / GK - HMI GTO (COM1) | 9-way SUB-D/RS232 | | XBT ZG9740 |
| Mitsubishi FX CPU | XBT GT / GK - HMI GTO (COM1) | Mini-DIN 8/RS232 | | HMI Z951 |
| Mitsubishi Q Link | XBT GT / GK - HMI GTO (COM1) | 9-way SUB-D/RS232 | | XBT ZG9772 |
| Mitsubishi Q CPU | XBT GT / GK - HMI GTO (COM1) | 8-way mini-DIN/RS232 | | XBT ZG9774 |

(1) For the full list of connection accessories, please consult our site <http://www.schneider-electric.com>.



| Box PC Universal | |
|------------------------------------|---|
| CPU & RAM types | Atom N270 1,6 Ghz Fanless with DDR2 RAM |
| PCI Slots | 1 PCI 2 (1 PCI + 1 PCIe) |
| Operating System | WES 2009 XP PRO SP3 |
| Storage | CF >= 4Gb (SLC) Flash disk SSD >= 60Go (5 year warranty) HDD >= 500Go Flash disk SSD >= 60Go (5 year warranty) HDD >= 500Go |
| Integrated DVD-RW | – 1 |
| Slide-in | 1 for storage 1 for storage + 1 for DVD-RW (or for storage with adapter) |
| Power supply | 24V DC |
| Integrated ports | 2 Ethernet Gigabit, 5 USB, 2 RS232, 1 DVI |
| Optional | Battery-backup*, additional RS232/485 port, additional DVI for Box PC 2 slots, redundant RAID HDD by PCI |
| Overall dimensions W x H x D (mm) | 82 x 270 x 251 121 x 270 x 251 |
| Industrial Certifications | CE, UL508 industrial control, cUL, ANSI/ISA 12.12.01 for hazardous locations, Gost, C-Tick |
| Marine certification | Germany Loyd with power filter – Germany Loyd with power filter – |
| Vijeo Designer | Vijeo Designer Run Time demo. Unlimited licence to be ordered separately (VJDSNRTMPC) |
| 1GB RAM | HMIBUCND1E01 HMIBUFND1P01 HMIBUHND1P01 HMIBUFND2P01 HMIBUHND2P01 |
| Vijeo Citect Full 500 I/O, 2Gb RAM | – HMIBUFND17F1 – HMIBUFND2PF1 – |

Configured iPC service

*Other configurations on request. Please consult our Customer Care Center.



| Box PC Performance | |
|------------------------------------|---|
| CPU & RAM types | Core 2 Duo 2,26 Ghz Fan, with DDR3 RAM |
| PCI Slots | 2 (1 PCI + 1 PCIe) 5 (2 PCI + 3 PCIe) |
| Operating System | Windows 7 64 bits Ultimate |
| Storage | Flash disk SSD >= 60Go (5 year warranty) HDD >= 500Go Flash disk SSD >= 60Go (5 year warranty) HDD >= 500Go |
| Integrated DVD-RW | 1 |
| Slide-in | 1 for storage + 1 for DVD-RW (or for storage with adapter) |
| Power supply | 24V DC |
| Integrated ports | 2 Ethernet Gigabit, 5 USB, 2 RS232, 1 DVI |
| Optional | Battery-backup*, additional RS232/485 port, additional DVI, redundant RAID HDD by PCI |
| Overall dimensions W x H x D (mm) | 121 x 270 x 251 217 x 270 x 251 |
| Industrial Certifications | CE, UL508 industrial control, cUL, ANSI/ISA 12.12.01 for hazardous locations, Gost, C-Tick |
| Marine certification | – |
| Vijeo Designer | Vijeo Designer Run Time demo. Unlimited licence to be ordered separately (VJDSNRTMPC) |
| 2Gb RAM | HMIBPFDD2701 HMIBPHDD2701 HMIBPFDD5701 HMIBPHDD5701 |
| Vijeo Citect Full 500 I/O, 4Gb RAM | HMIBPFDD27F1 – HMIBPFDD57F1 – |

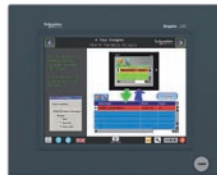
Configured iPC service

*Other configurations on request. Please consult our Customer Care Center.



| | 15" touch & keypad | 15" touch | 15" touch | 19" touch |
|--|----------------------|----------------------|-----------------------|----------------------|
| Touchscreen | 15" LCD TFT | 15" LCD TFT | 15" LCD TFT | 19" LCD TFT |
| Resolution | XGA 1024x768 | XGA 1024x768 | XGA 1024x768 | SXGA 1280x1024 |
| Front side port | 1 x USB | | | |
| Video ports | 1 x VGA & 1 x DVI | | | |
| Touchscreen ports | 1 x USB & 1 x RS 232 | | | |
| Certification | UL508, CSA | UL508, CSA | UL508, CSA, Marine GL | UL508, CSA |
| Overall dimensions W x H x D (mm) | 483 x 65 x 365 | 395 x 60 x 294 | 395 x 60 x 294 | 460 x 65 x 390 |
| References | AC | MPCNB50NAN00N | MPCYT50NAN00N | MPCYT90NAN00N |
| | DC | – | – | HMIDID7DT0 |

PC Panel Magelis Panel PC 10", 15"



| | Optimum Panel PC 10" | Optimum Panel PC 15" | Optimum Panel PC 15" with aluminium bezel |
|--|---|---------------------------------|---|
| Touch screen | 10" LCD TFT with LED, IP65 | 15" LCD TFT with LED, IP65 | |
| Resolution | SVGA 800x600, 16 Million colors | XGA 1024x768, 16 Million colors | |
| CPU | Atom Z510 1,1 Ghz Fanless | | |
| Operating System | WES 2009 | | |
| RAM | 1 GB DDR2 | | |
| OS storage | CF 2Gb (SLC) CF 4Gb (SLC) | | |
| User storage | SD card | | |
| Power supply | 24V DC | | |
| Intergated ports | 2 x Ethernet Gigabit, 1 USB front + 2 USB, 1 RS232 | | 2xEthernet Gigabit, 2xUSB, 1xRS232 |
| Overall dimensions W x H x D (mm) | 323 x 260 x 72 | 402 x 301 x 72 | |
| Industrial Certifications | CE, UL508 industrial control, cUL, ANSI/ISA 12.12.01 for hazardous locations, Gost, C-Tick, IP65 Nema 4X indoor | | ATEX II 3 gas and dust zone 2/22 et EN1672-2 (Food processing machines) FDA 21 CFR 177.2006 (US standard Flat seals). |
| Marine certification | Germany Loyd with power filter | | |
| Software | Office & PDF readers, Internet browser, .Net 3.5, Vijeo Designer RT demo (Unlimited licence to be ordered separately VJDSNRTMPC), Vijeo Citect web client | | |
| Part number | HMIPWC5D0E01 HMIPWC5D0E01A | HMIPWC7D0E01 | HMIPV7D0E01 |

Configured iPC service

*Other configurations on request. Please consult our Customer Care Center.



Panel PC Universal 15"

| | | | | | |
|---|---|--|---------------------|--|---------------------|
| Touch screen | 15" LCD TFT with LED backlight, IP65, same cut-out than legacy | | | | |
| Resolution | XGA 1024x768, 16 Million colors | | | | |
| CPU & RAM types | Atom N270 1,6 Ghz Fanless with DDR2 RAM | | | | |
| PCI Slots | - | | | 2 (1 PCI + 1 PCIe) | |
| Operating System | WES 2009 | XP PRO SP3 | | | |
| Storage | CF >= 4Go (SLC) | Flash disk SSD >= 60Go (5 year warranty) | HDD >= 500Go | Flash disk SSD >= 60Go (5 year warranty) | HDD >= 500Go |
| Integrated DVD-RW | - | | | | 1 |
| Slide-in | 1 for storage | | | 1 for storage + 1 for DVD-RW (or for storage with adapter) | |
| Integrated ports | 2 Ethernet Gigabit, 1 front USB + 4 USB, 2 RS232, 1 DVI | | | | |
| Optional | Battery-backup*, additional RS232/485 port* | | | + redundant RAID HDD by PCI | |
| Overall dimensions W x H x D (mm) | 402 x 301 x 104 | | | 402 x 301 x 153 | |
| Industrial Certifications | CE, UL508 industrial control, cUL, ANSI/ISA 12.12.01 for hazardous locations, Gost, C-Tick, | | | | |
| Marine certification | Germany Loyd with power filter | - | | | |
| Vijeo Designer | Vijeo Designer Run Time demo. Unlimited licence to be ordered separately (VJDSNRTMPC) | | | | |
| 1GB RAM - DC power supply | HMIPUC7D0E01 | HMIPUF7D0P01 | HMIPUH7D0P01 | - | HMIPUH7D2P01 |
| Vijeo Citect Lite 1200 I/O, 2Gb RAM - DC | - | HMIPUF7D0PL1 | - | - | - |
| 1Gb RAM - AC power supply | - | HMIPUF7A0P01 | HMIPUH7A0P01 | HMIPUF7A2P01 | HMIPUH7A2P01 |
| Vijeo Citect Full 500 I/O, 2Gb RAM - AC | - | - | - | HMIPUF7A2PF1 | - |

Configured iPC service

*Other configurations on request. Please consult our Customer Care Center.



Panel PC Performance 15"

| | | | | | |
|---|---|---------------------|--|--|---|
| Touch screen | 15" LCD TFT with LED backlight, IP65, same cut-out than legacy | | | | |
| Resolution | XGA 1024x768, 16 Million colors | | | | |
| CPU & RAM types | Core 2 Duo 2,26 Ghz Fan, with DDR3 RAM | | | | |
| PCI Slots | - | | | 2 (1 PCI + 1 PCIe) | |
| Operating System | Windows 7 64 bits Ultimate | | | | |
| Storage | Flash disk SSD >= 60Go (5 year warranty) | HDD >= 500Go | Flash disk SSD >= 60Go (5 year warranty) | HDD >= 500Go | |
| Integrated DVD-RW | - | | | | 1 |
| Slide-in | 1 for storage | | | 1 for storage + 1 for DVD-RW (or for storage with adapter) | |
| Integrated ports | 2 Ethernet Gigabit, 1 front USB + 4 USB, 2 RS232, 1 DVI | | | | |
| Optional | Battery-backup*, add. RS232/485 port* | | | + redundant RAID HDD by PCI | |
| Overall dimensions W x H x D (mm) | 402 x 301 x 118 | | | 402 x 301 x 168 | |
| Industrial Certifications | CE, UL508 industrial control, cUL, ANSI/ISA 12.12.01 for hazardous locations, Gost, C-Tick, | | | | |
| Vijeo Designer | Vijeo Designer Run Time demo. Unlimited licence to be ordered separately (VJDSNRTMPC) | | | | |
| 2Gb RAM - DC power supply | HMIPPF7D0701 | HMIPPH7A0701 | - | HMIPPH7D2701 | |
| 2Gb RAM - Battery back-up interface - DC | - | - | - | HMIPPH7B2701 | |
| Vijeo Citect Full 500 I/O, 4Gb RAM - DC | HMIPPF7D07F1 | - | - | - | |
| 2Gb RAM - AC power supply | - | HMIPPH7D0701 | HMIPPF7A2701 | HMIPPH7A2701 | |
| Vijeo Citect Full 500 I/O, 4Gb RAM - AC | - | - | HMIPPF7A27F1 | - | |

Configured iPC service

*Other configurations on request. Please consult our Customer Care Center.



Panel PC Universal 19"

| | | | | |
|--|-----------------------------|---------------------|--|---------------------|
| 19" LCD TFT with LED backlight, IP65 | | | | |
| SXGA 1280x1024, 16 Million colors | | | | |
| Atom N270 1,6 Ghz Fanless with DDR2 RAM | | | | |
| - | | | | 2 (1 PCI + 1 PCIe) |
| WES 2009 | XP PRO SP3 | | | |
| CF =< 4Gb (SLC) | Flash Disk =<32Go (SSD SLC) | HDD =<250Go | Flash Disk =<32Go (SSD SLC) | HDD =<250Go |
| - | | | 1 | |
| 1 for storage | | | 1 for storage + 1 for DVD-RW (or for storage with adapter) | |
| 2 Ethernet Gigabit, 1 front USB + 4 USB, 2 RS232, 1 DVI | | | | |
| Battery-backup*, additional RS232/485 port* | | | + redundant RAID HDD by PCI | |
| 480 x 380 x 114 | | | 480 x 380 x 153 | |
| CE, UL508 industrial control, cUL, ANSI/ISA 12.12.01 for hazardous locations, Gost, C-Tick, Germany Loyd with power filter | | | | |
| Vijeo Designer Run Time demo. Unlimited licence to be ordered separately (VJDSNRTMPC) | | | | |
| HMIPUC9D0E01 | HMIPUF9D0P01 | HMIPUH9D0P01 | - | HMIPUH9D2P01 |
| - | HMIPUF9D0PF1 | - | - | - |
| - | - | HMIPUH9A0P01 | HMIPUF9A2P01 | HMIPUH9A2P01 |
| - | - | - | HMIPUF9A2PF1 | - |

*Other configurations on request. Please consult our Customer Care Center.



Panel PC Performance 19"

| | | | | |
|---|---------------------|-----------------------------|--|--------------------|
| 19" LCD TFT with LED backlight, IP65 | | | | |
| SXGA 1280x1024, 16 Million colors | | | | |
| Core 2 Duo 2,26 Ghz Fan, with DDR3 RAM | | | | |
| - | | | | 2 (1 PCI + 1 PCIe) |
| Windows 7 64 bits Ultimate | | | | |
| Flash Disk =<32Go (SSD SLC) | HDD =<250Go | Flash Disk =<32Go (SSD SLC) | HDD =<250Go | |
| - | | | 1 | |
| 1 for storage | | | 1 for storage + 1 for DVD-RW (or for storage with adapter) | |
| 2 Ethernet Gigabit, 1 front USB + 4 USB, 2 RS232, 1 DVI | | | | |
| Battery-backup*, add. RS232/485 port* | | | + redundant RAID HDD by PCI | |
| 480 x 380 x 129 | | | 480 x 380 x 168 | |
| CE, UL508 industrial control, cUL, ANSI/ISA 12.12.01 for hazardous locations, Gost, C-Tick, Vijeo Designer Run Time demo. Unlimited licence to be ordered separately (VJDSNRTMPC) | | | | |
| HMIPPF9D0701 | HMIPPH9D0701 | - | HMIPPH9D2701 | |
| - | - | - | - | |
| HMIPPF9D07F1 | - | - | - | |
| - | HMIPPH9A0701 | HMIPPF9A2701 | HMIPPH9A2701 | |
| - | - | HMIPPF9A27F1 | - | |

*Other configurations on request. Please consult our Customer Care Center.

Vijeo Designer configuration software enables creation of automated system control operator dialogue applications for Magelis STO/STU, XBT GT, GK, GTW, GH, GTO terminals, Box PC and Panel PC.

Configuration

Vijeo Designer configuration software enables fast, simple processing of operator dialogue projects thanks to its ergonomics, developed around 6 configurable windows.

It also offers comprehensive application management tools:

- . Project creation (one or several targets).
- . Recipe editor
- . User action list (eg. script) for application adaptability.
- . Vectorial graphic library for more attractive graphic screens.
- . Simulation mode for simple design office application testing.
- . High-performance graphic editor for simple block diagram creation (over 30 animated preconfigured generic objects).
- . Data sharing (up to 300 variables on 8 terminals).
- . Management of 40 alphabets with the opportunity to have 15 languages per application and dynamic change.
- . Programmable controller database sharing (Unity Pro, PL7, Concept, TwidoSoft, ProWORX, ModSoft), process variables or operators actions
- . Advanced traceability function (periodic, at event or on request).
- . Event-triggered e-mail function
- . Over 35 third party protocols
- . Printing function
- . Multilingual software : English, French, German, Italian, Spanish, Portuguese and Simplified Chinese.

The Vijeo Designer Limited Edition, free access allows you to configure the Magelis STO/STU.

Industrial intelligence option: Intelligent Data Service

Intelligent Data Service (IDS) is an extension of Vijeo Designer for the PC (Magelis or standard PC) which supports the implementation of control solutions for one or a number of terminals (up to 8). This extension offers total traceability. Both process variables and operator actions are tracked so that the right decisions can be made at the right time (Industrial Business Intelligence). Powerful Data can be collected from multiple terminals via Ethernet without impairing HMI reaction times.

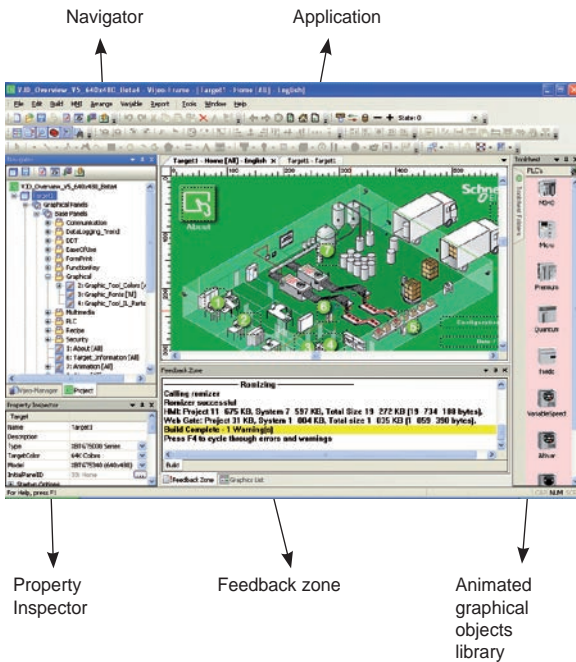
Flexible Various storage methods are supported, CSV file can be read directly in MS Excel, recording in user-defined format in an SQL database or secure IDV (Intelligent Data Vault) files to ensure compatibility with the requirements of 21 CFR Part 11.

Intelligent Data Service Report Printing option

Intelligent Data Service (IDS) Report Printing is an extension of Intelligent Data Service for the PC (Magelis or Standard PC).

This extension allows you to create new reports “from scratch” and link them to IDS data.

In addition to editing functions, IDS Report Printing allows you to preview the report before printing, print it or save it to file on disk.





Vijeo Designer



Vijeo Designer IDS

Selection guide for Vijeo Designer

| Number of licences | Composition | References |
|----------------------|----------------------------|--------------------------------|
| Single (1) | No cable With USB cable | VJDSNDTGSV●●M VJDSUDTGSV●●M |
| Group (3) | No cable | VJDGNDTGSV●●M |
| Team (10) | No cable | VJDTNDTGSV●●M |
| Facility (Unlimited) | No cable | VJDFNDTGSV●●M |

The software is supplied on DVD and runs under Windows® XP and Windows 7.

●● represent the version number.

Run Time on Magelis iPC

| | |
|------------|------------|
| Single (1) | VJDSNRTMPC |
|------------|------------|

Run Time Intelligent Data Service

| | |
|-------------|---------------|
| Single (1)* | VJDSNTRCKV●●M |
|-------------|---------------|

* Need a registered Run Time for Magelis iPC

Run Time Intelligent Data Service Report Printing

| | |
|-------------|--------------|
| Single (1)* | VJDSNTRPR●●M |
|-------------|--------------|

* Need a registered Run Time for Intelligent Data Service

Remote access

Vijeo Design'Air is Schneider Electric's application for Android and iOS tablets and smartphones. This feature enables you to remotely connect to an HMI terminal over a WiFinetwork and have a graphical view of the HMI terminal on your tablet and smartphone (2).

> HMI AUTO-DETECT

Vijeo Design'Air scans and detects available on HMI terminals on a nearby network.

> REMOTE MONITORING

Vijeo Design'Air connects tablets and smartphones to HMI terminals, and allows remote viewing and controlling of HMI projects at run time.

> ADVANCED SCREEN

Vijeo Design'Air takes advantage of the advanced graphic and multi-touch capabilities of tablets and smartphones and applies it to the automation industry.



Vijeo Design'Air

(2) Available in 2014 for Magelis iPC industrial PC and for Magelis SCU HMI Controllers.

Schneider Electric Industries SAS

Head Office
35, rue Joseph Monier - CS 30323
F92500 Rueil-Malmaison Cedex
France

www.schneider-electric.com

The information provided in this documentation contains general descriptions and/or technical characteristics of the performance of the products contained herein. This documentation is not intended as a substitute for and is not to be used for determining suitability or reliability of these products for specific user applications. It is the duty of any such user or integrator to perform the appropriate and complete risk analysis, evaluation and testing of the products with respect to the relevant specific application or use thereof. Neither Schneider Electric nor any of its affiliates or subsidiaries shall be responsible or liable for misuse of the information contained herein.

Design : IGS-CP
Photos : Schneider Electric
Print :